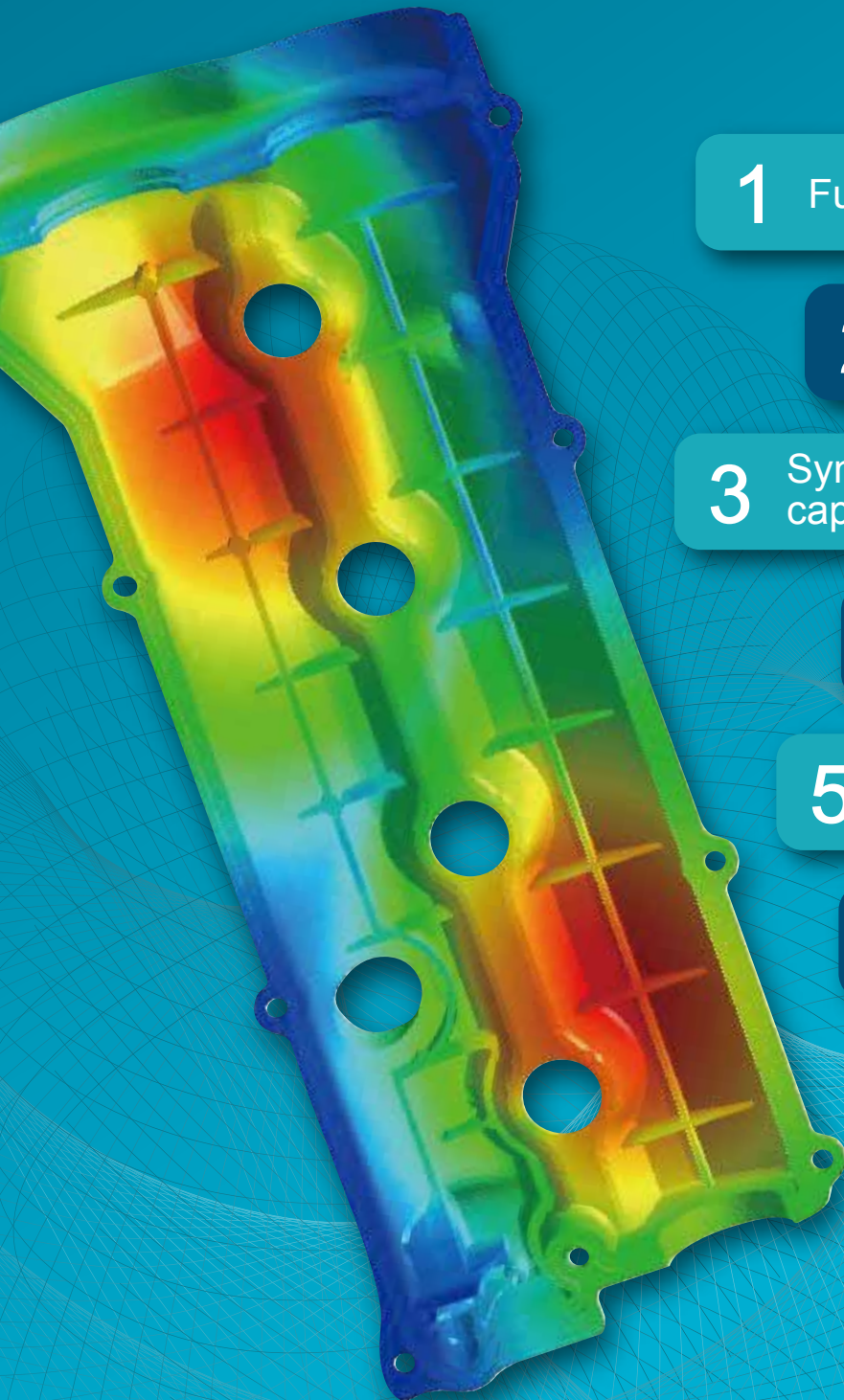


# eDesignSYNC for PTC® Creo®

Complete Molding Simulation for Plastic Design in PTC® Creo®



**1** Fully embedded in PTC® Creo®

**2** Seamless workflow from CAD design to simulation

**3** Synchronous simulation capabilities

**4** Automated 3D meshing technology

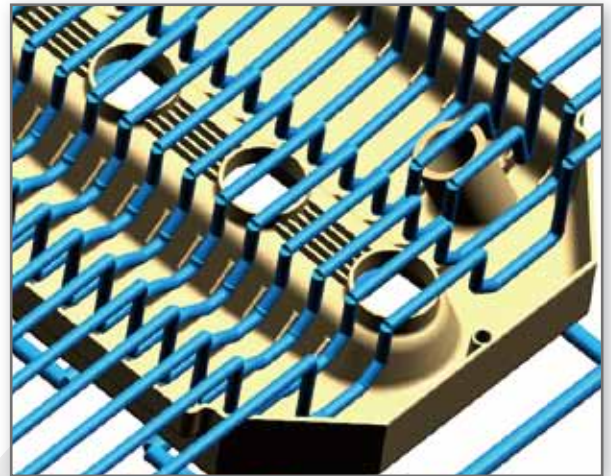
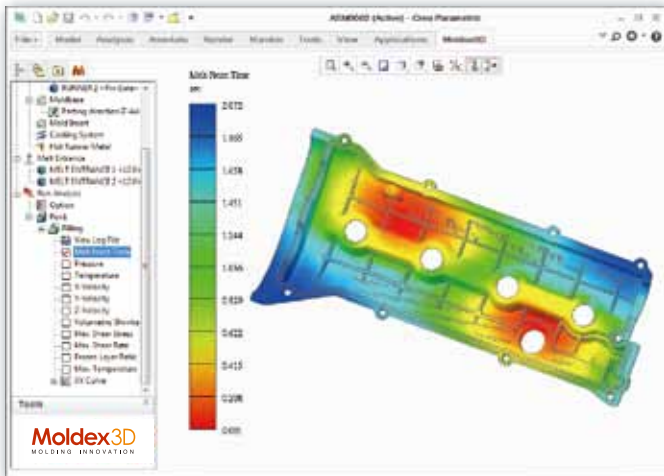
**5** Comprehensive Moldex3D material databank

**6** High-speed parallel computing technology

**7** Professional eDesign analysis modules

**8** Intuitive solutions for best design

# The Bridge to Smart Design



- Complete molding component and process settings and visualize analysis results in PTC® Creo®
- Easy-to-use interface for all aspects of users' design process

Fully embedded in PTC® Creo®

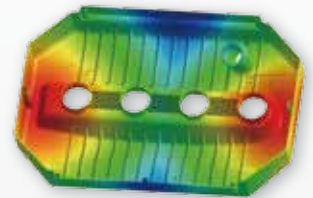
Flexible interface interoperability

- Seamless workflow from CAD design to simulation
- Synchronous simulation capabilities for design change encouragement

eDesignSYNC for PTC® Creo®

Complete analysis capabilities

Smart technology for best design



- Automated true 3D meshing technology
- High-speed parallel processing technology
- Adviser for gate location, cooling time, L/T and sink mark
- Easy to create gate, runner and mold base using Wizards



- Flow/Pack/Cool/Warp/Fiber Multi-Component Molding (MCM)

## Supported Platform

Platform	Minimum	Recommended
	<ul style="list-style-type: none"> <li>• CPU: Intel® Core i5, AMD Athlon or higher</li> <li>• RAM: 4GB</li> <li>• Hard Disk: 60GB</li> </ul>	<ul style="list-style-type: none"> <li>• CPU: Intel® Core i7, AMD Athlon or higher</li> <li>• RAM: 8GB</li> <li>• Hard Disk: 60GB</li> </ul>
Software	OS	Windows 8, 7, Vista 32/64bit
	Moldex3D	Moldex3D eDesign R12.0
Interface Language	Traditional Chinese, Simplified Chinese, English, Japanese, Spanish	

## CoreTech System Co., Ltd.

### Headquarters

8F-2, No.32, Taiyuan St. Chupei City, Hsinchu County 302, Taiwan  
 mail@moldex3d.com  
 Tel +886-3-560-0199

### America

27725 Stansbury Blvd., Suite 190  
 Farmington Hills, MI 48334  
 sales.us@moldex3d.com

For more information, please visit [www.moldex3d.com](http://www.moldex3d.com)

© 2013 CoreTech System. All rights reserved.  
 DM-SYNC-Creo-R12-EN-13-V2