

# Moldex3D<sup>®</sup>

## eDesign

### Ensure your design

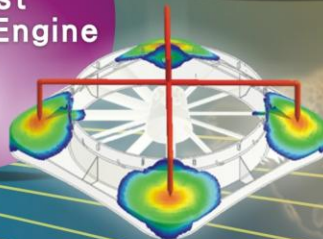
- ▶ Validate and optimize part/mold design with true 3D simulation
- ▶ Minimize cost, design cycle and time to market
- ▶ Maximize productivity and return on investment



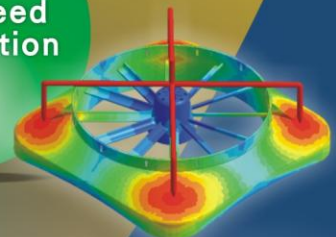
Quick & Direct  
CAD/CAE  
Integration



Robust  
Analysis Engine

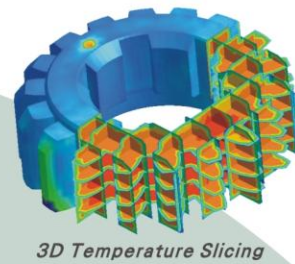
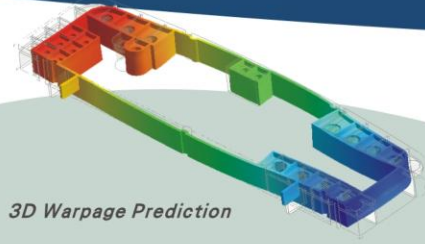


High-Speed  
Computation



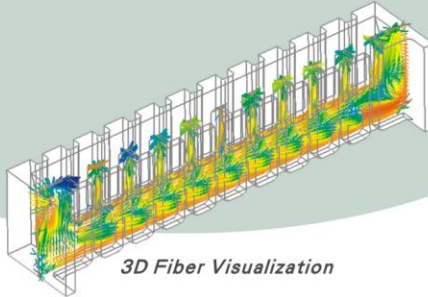
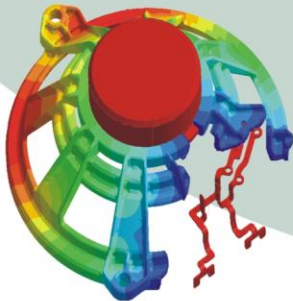
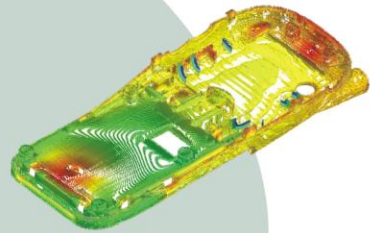
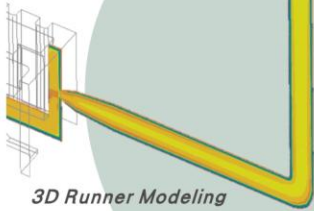
Accurate  
&  
Understandable  
Results





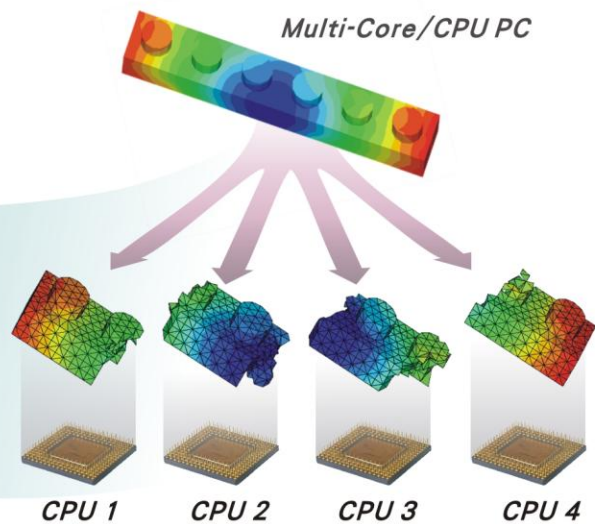
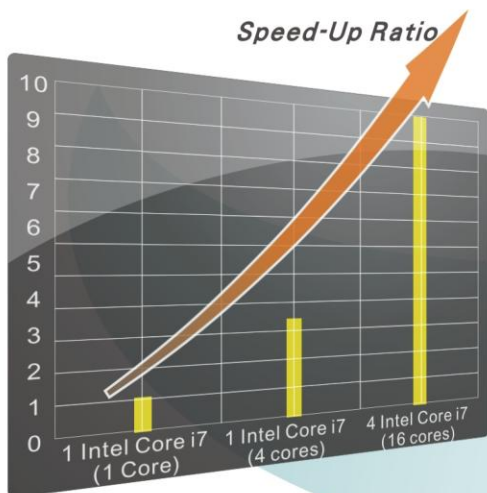
## Pioneering 3D technology

Moldex3D/eDesign provides true 3D simulation capabilities customized for plastic part and mold design with an automatic meshing engine and user-friendly interfaces to create reliable results. It validates your innovations and enhances your global competitiveness.

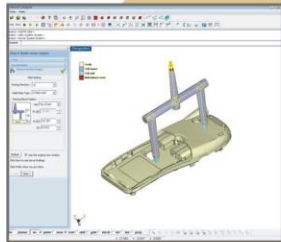
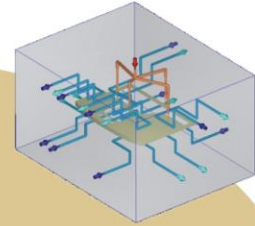


## Parallel computing

Moldex3D/eDesign presents enhanced accuracy and speed with the assistance of parallel computing technology to shorten the design cycle and time-to-market.

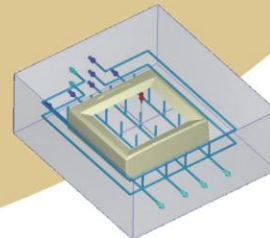
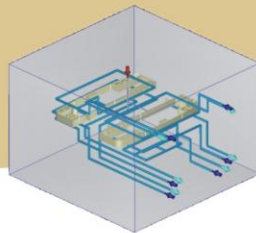
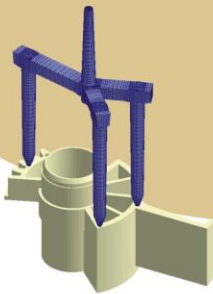
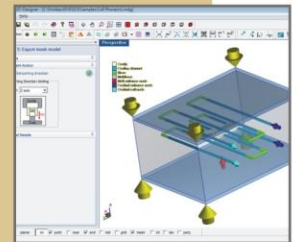


## Runner Wizard



## Intelligence

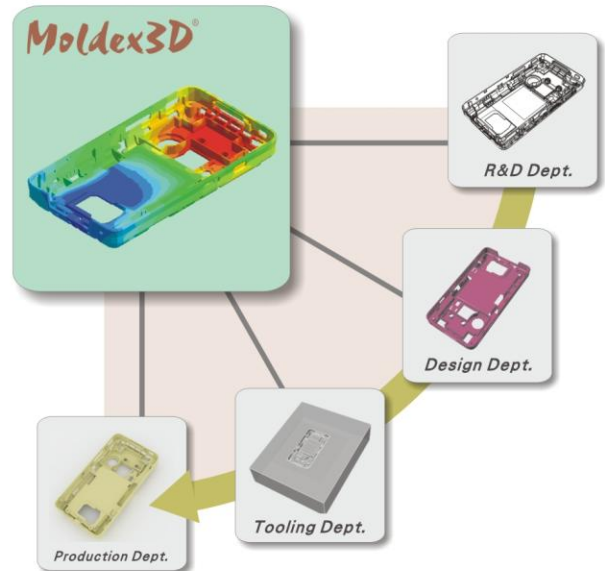
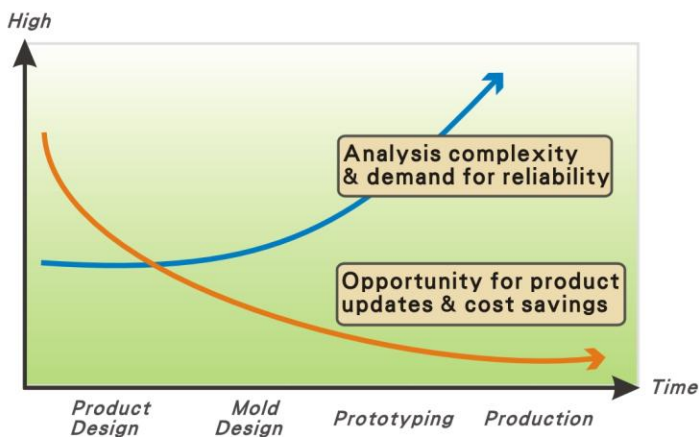
Creating an entire feeding and cooling system takes only 5 steps with Moldex3D/eDesign. The wizards provide the users convenient and efficient tools for the construction of gates, runners, cooling channels and the mold base.



## Mold Wizard

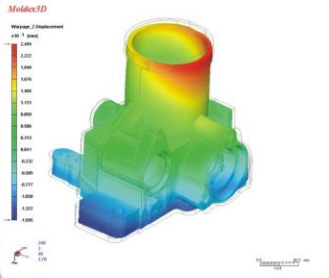
## Flexibility

3D simulation CAE is cost effective and reliable. It enables part and mold designers to achieve design expectation and overcome production challenges. Quick and accurate design verification is now possible.

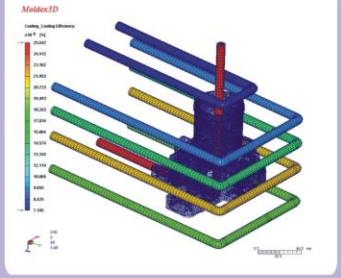


## Teamwork

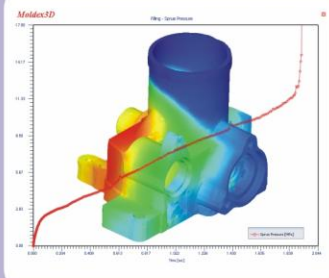
Moldex3D/eDesign has a highly efficient working platform that allows cross-department collaboration and collective intelligence to support decision making.



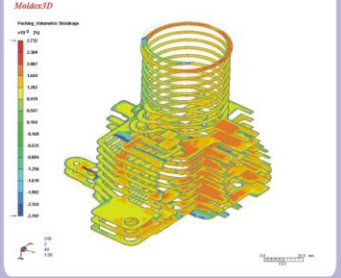
**Warp**  
 Display and analyze...  
 -Part deflection  
 -Flatness  
 -Deformation plots for specific dimensions  
 -Deformed model output in STL  
 -Influence of fiber orientation  
 (Additional module required)  
 ...etc.



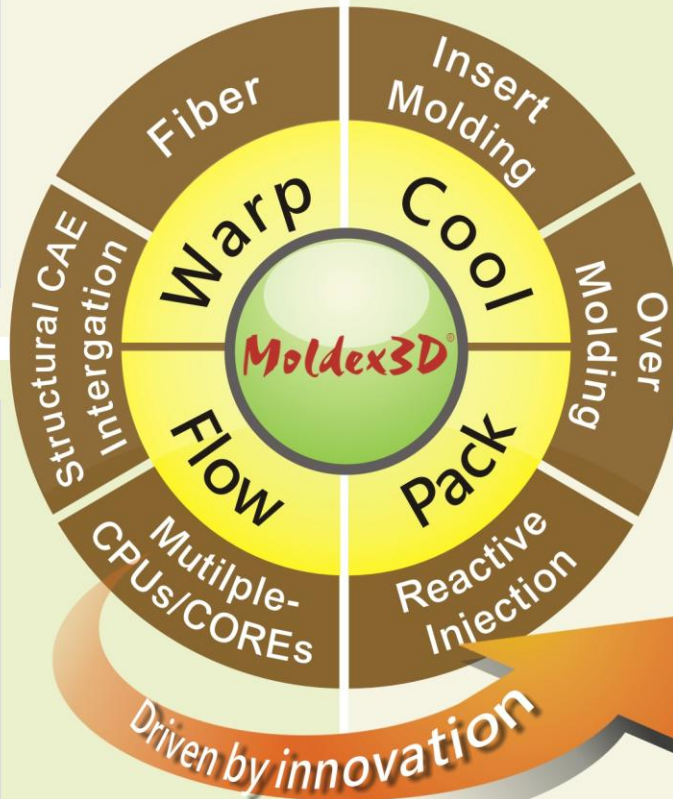
**Cool**  
 Display and analyze...  
 -3D temperature distribution  
 -Hot spot area  
 -Required cooling time  
 -Cooling channel efficiency  
 -Heat flux  
 ...etc.



**Flow**  
 Display and analyze...  
 -3D melt front pattern  
 -Welding line / air trap location  
 -Inj. Pressure / clamping force to fill  
 -Pressure/temperature distribution  
 -Gate flow rate (single/multiple cavities)  
 -Shear rate, velocity and stress  
 -Influence of fiber orientation  
 (Additional module required)  
 ...etc.



**Pack**  
 Display and analyze...  
 -3D shrinkage display  
 -Pressure/temperature distribution  
 -Clamping force  
 -Shear rate, velocity and stress  
 -Density  
 -Part weight (single/multiple cavities)  
 -Gate freeze time  
 ...etc.



## System Requirements

- Microsoft Windows 7, Windows Vista, Windows Server 2008, Windows HPC Server 2008.
- Intel Core i7, Intel Core2Duo, Intel Pentium, Intel Xeon, Intel EM64T, AMD Athlon or AMD Opteron Based Processor.
- 8GB RAM or greater.