

# eDesignSYNC for Creo

Complete Molding Simulation for Part and Mold Optimization

**1** Fully embedded in Creo

**2** Seamless workflow from CAD design to simulation

**3** Synchronous simulation capabilities

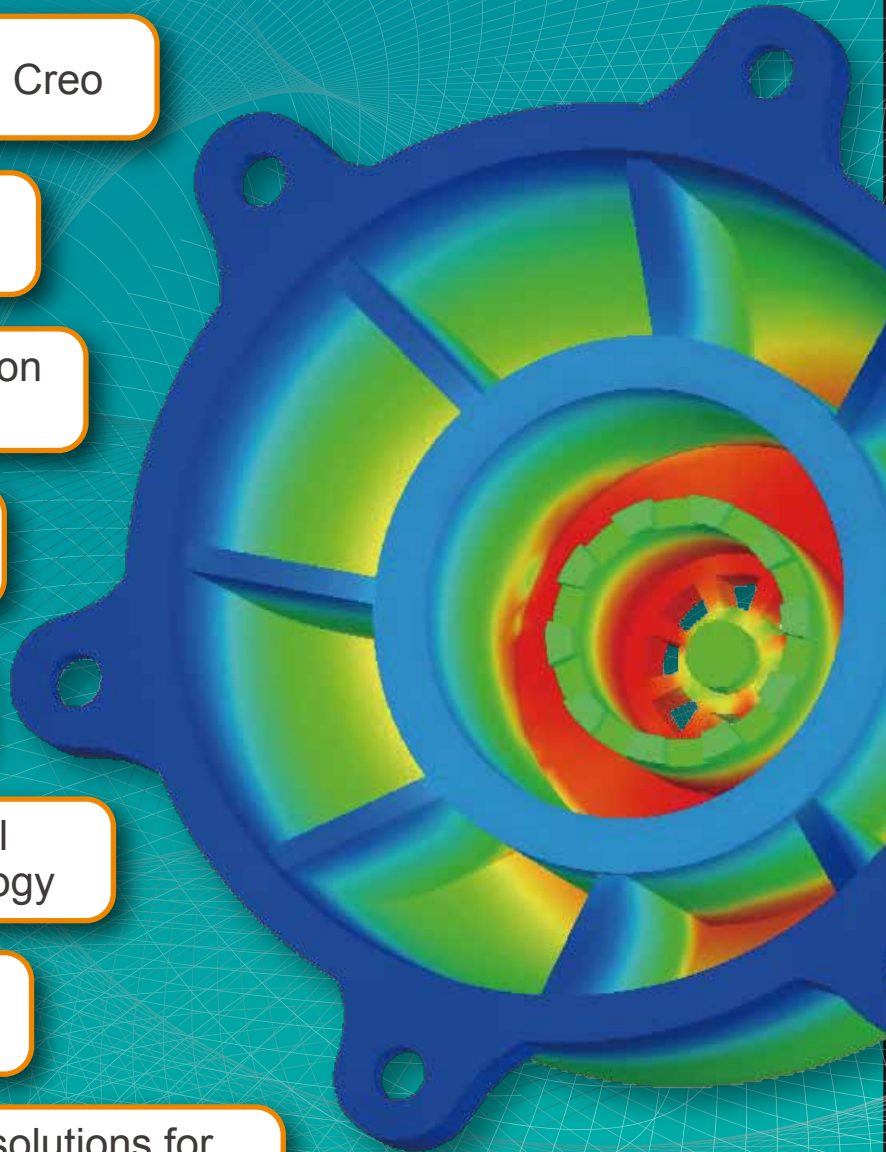
**4** Automated 3D meshing technology

**5** Comprehensive Moldex3D material databank

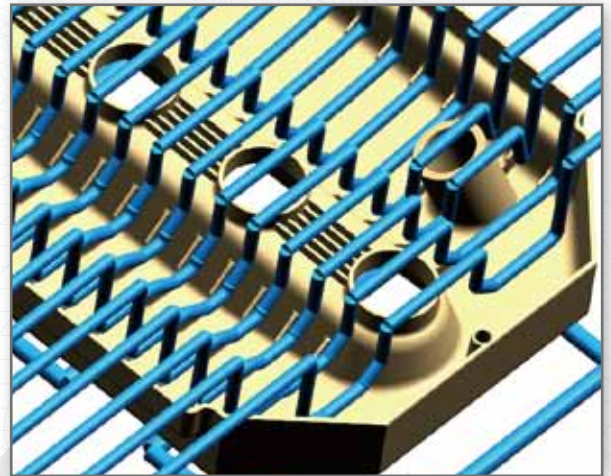
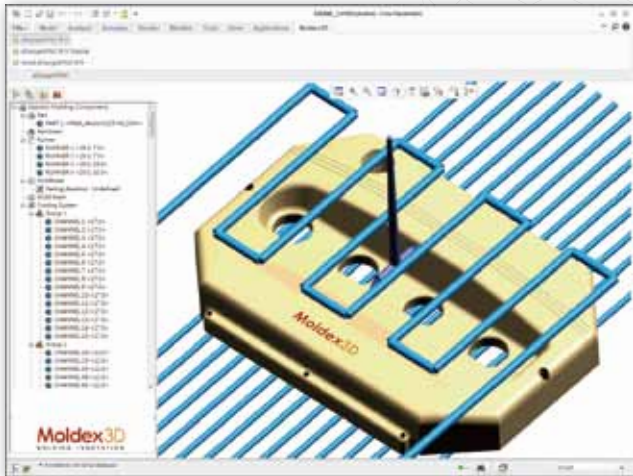
**6** High-speed parallel computing technology

**7** Professional eDesign analysis modules

**8** Intuitive solutions for best design



# The Bridge to Smart Design



- Easy-to-use interface for all aspects of users' design process

Fully embedded in Creo

Flexible interface interoperability

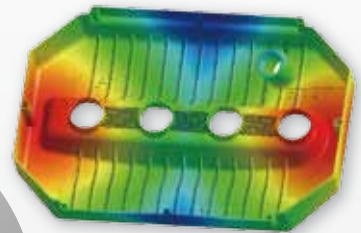
- Seamless workflow from CAD design to simulation
- Synchronous simulation capabilities for design changes encouragement



eDesignSYNC for Creo

Complete analysis capabilities

Smart technology for best design



- Flow/Pack/Cool/Warp/Fiber Multi-Component Molding (MCM)

- Automated true 3D meshing technology
- High-speed parallel computing technology
- HTML/PowerPoint analysis report generator

## Supported Platform

Platform	Windows	Windows 7 32/64bit, Windows Vista 32/64bit	Recommended Hardware	CPU	Intel® Core i7, AMD Athlon or higher
Software	Moldex3D	Moldex3D eDesign R11.0 SP1		RAM	4GB RAM or higher
	Creo	Pro/ENGINEER Wildfire 4.0, Creo Elements/Pro 5.0, Creo Parametric 1.0, 2.0		Hard disk	60GB or larger
Interface Language		Traditional Chinese, Simplified Chinese, English, Japanese, Spanish			

## CoreTech System Co., Ltd.

### Headquarters

8F-2, No.32, Taiyuan St. Chupei City, Hsinchu County 302, Taiwan  
 mail@moldex3d.com  
 Tel +886-3-560-0199

### North America Office

Farmington Hills Corporate Center I  
 21800 Haggerty Road, Suite 109,  
 Northville MI 48167  
 Tel +1-248-946-4570

For more information, please visit [www.moldex3d.com](http://www.moldex3d.com)

© 2012 CoreTech System. All rights reserved.  
 DM-SYNC-Creo-R11-EN-12-V1